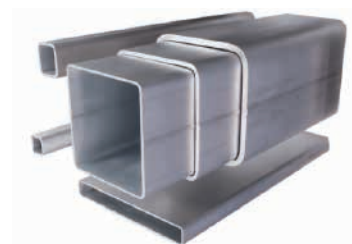


THE MATTER THAT LINKS US

STAINLESS STEELS

STAINLESS

EURONORM	DIN/DIN EN	AISI
1.3964	X2CrNiMoNNb21-16-5-3	XM-19
1.4000	X 6 Cr 13	410S
1.4005	X 12 Cr S 13	416
1.4006	X 12 Cr 13	410
1.4021	X 20 Cr 13	420 A
1.4028	X 30 Cr 13	420 B
1.4034	X 46 Cr 13	420 C
1.4057	X 17 Cr Ni 16-2	431
1.4104	X 14 Cr Mo S 17	430 F
1.4112	X 90 Cr Mo V 18	440 B
1.4125	X 39 Cr Mo 17-1	440 C
1.4301	X 5 Cr Ni 18-10	304
1.4305	X 8 Cr Ni S 18-9	303
1.4306	X 2 Cr Ni 19-11	304 L
1.4307	X 2 Cr Ni 18-9	304 L
1.4313	X 3 Cr Ni Mo 13-4	CA6-NM
1.4404	X 2 Cr Ni Mo 17-12-2	316 L
1.4435	X 2 Cr Ni Mo 18-14-3	316 L /Mo
1.4418	X 4 Cr Ni Mo 16-5-1	
1.4541	X 6 Cr Ni Ti 18-10	321
1.4542	X 5 Cr Ni Cu Nb 16-4	630 / 17-4 PH
1.4545	X 5 Cr Ni Cu Nb 15-5-4	15-5 PH
1.4571	X 6 Cr Ni Mo Ti 17-12-2	316 Ti



CORROSION RESISTANT

EURONORM	DIN/DIN EN	AISI
1.4439	X 2 Cr Ni Mo N 17-13-5	317 LMN
1.4529	X 1 Ni Cr Mo Cu N 25-20-7	UNS N 08926
1.4539	X 1 Ni Cr Mo Cu 25-20-5	904L
1.4547	X 1 Ni Cr Mo Cu N 25-18-7	254 S Mo

HEAT RESISTANT

EURONORM	DIN/DIN EN	AISI
1.4713	X 10 Cr Al Si 7	
1.4742	X 10 Cr Al Si 18	
1.4762	X 10 Cr Al Si 25	446
1.4828	X 15 Cr Ni Si 20-12	309
1.4835	X 9 Cr Ni Si N Ce 21-11-2	253 MA
1.4550	X 6 Cr Ni Nb 18-10	347 / 347 H
1.4841	X 18 Cr Ni Si 25-21	314
1.4845	X 18 Cr Ni 25-21	310S / 310H
1.4876	X 10 Ni Cr Al Ti 32-20	B163
1.4878	X 8 Cr Ni Ti 18-10	321H
1.4923	X 22 Cr Mo V 12-1	F 91

OUR PRODUCTS

Sheet metal
Round bar
Square bar
Hexagonal bar
Perforated bar
Disks
Clamps
Hoops
Piping accessories
Folded profiles
Square and rectangular
structural pipes
I-shaped girders

NICKEL ALLOYS

CORROSION RESISTANT

EURONORM	ALLOY	UNS
1.4562	ALLOY 31	UNS N 08031
1.4876	ALLOY 800	UNS N 08800
2.4068	ALLOY 201	UNS N 02200
2.4360	ALLOY 400	UNS N 04400
2.4375	ALLOY K-500	UNS N 05500
2.4602	ALLOY C-22	UNS N 06022
2.4617	ALLOY B-2	UNS N 10665
2.4660	ALLOY 20	UNS N 08020
2.4665	ALLOY X	UNS N 06002
2.4668	ALLOY 718	UNS N 07718
2.4669	ALLOY X - 750	UNS N 07750
2.4816	ALLOY 600	UNS N 06600
2.4819	ALLOY C - 276	UNS N 10276
2.4856	ALLOY 625	UNS N 06625
2.4858	ALLOY 825	UNS N 08825
2.4952	ALLOY 80 A	UNS N 07080
2.4605	ALLOY 59	UNS N 06059

HEAT RESISTANT

EURONORM	ALLOY	UNS
1.4862	ALLOY DS	UNS N 08330
1.4864	ALLOY 330	UNS N 08330
1.4958	ALLOY 800 H	UNS N 08810
1.4959	ALLOY 800 HT	UNS N 08811
2.4650	ALLOY C - 263	UNS N 07263
2.4665	ALLOY X	UNS N 06002
2.4816	ALLOY 600 / 600 H	UNS N 06600
2.4851	ALLOY 601 H	UNS N 06601



TITANIUM

EURONORM	ALLOY	UNS
3.7025	GRADO - 1	UNS R 50250
3.7035	GRADO - 2	UNS R 50400
3.7055	GRADO - 3	UNS R 50550
3.7065	GRADO - 4	UNS R 50700
3.7165	GRADO - 5	UNS R 56400

DUPLEX / SUPERDUPLEX

EURONORM	ALLOY	UNS
1.4460	X 3 Cr Ni Mo N 27-5-2	UNS S 32900
1.4462	X 2 Cr Ni Mo N 22-5-3	UNS S 31803
1.4410	X 2 Cr Ni Mo N 25-7-4	UNS S 32750
1.4501	X 2 Cr Ni Mo-Cu W N 25-7-4	UNS S 32760
1.4507	X 2 Cr Ni Mo Cu N 25-6-3	UNS S 32550

WATER JET CUTTING

ESL has a **Water Jet Cutting machine** with a bedplate of 3000 x 2000 mm and a thickness of up to 100 mm.

Water Jet Cutting allows the careful cutting of any metallic material without any heat exchange or thermal conductivity, which means that the structure of the metal remains intact without any straining or deformation along the sheet.

Cutting by means of this system is so precise that the subsequent processing of the material is unnecessary.



When your company needs Nickel Alloys, Titanium, or special Stainless Steel, **ESL is the solution.**

Since our origins in 1972 our continuous efforts have allowed us to become a leading company in the sector. We have accumulated our knowhow during over 40 years of experience in the field and we make up a team of professionals who are highly qualified in both technology and business matters; we are at our clients' service.

ESL has a large amount of stock of bars, sheet metal, pipes, and accessories. From our logistic warehouses in Legutiano in Álava we have immediate access to the major communication routes which link us to the whole of the Iberian Peninsula and Europe. This allows us to offer the best terms of delivery and to place our products anywhere in Spain with the utmost speed.

ESL has obtained the ISO 9001 quality certificate. At our installations we carry out the corresponding quality controls together with the checking of the Quality Certificates, the marking of material, etc.

ESL makes available to its clients the **Cutting to Measure System** for both bars and sheet metal by means of computerised **Water Jet Cutting** according to a plan. This allows us to offer both standard products and products with special designs according to our clients' specifications.

We also subcontract the processes of **machining and/or treatments** in accordance with our clients' specifications.

ESL supplies a great variety of clients belonging to highly diverse sectors such as the petrochemical industry, oil & gas, chemicals, water, paper, shipping, valves and pumps, the energy industry, seawater desalination plants, mining, industrial equipment, pharmaceuticals, aeronautics, construction, boilers, food and livestock, etc.

Our strength lies in our excellent service in the supplying of nickel alloys, titanium, and/or special steels whatever the format, the specification, the amount, or the quality required.

WHY ESL?

- We are experts in the product and its applications
- We have a large amount of stock combined with a fast and flexible distribution service supported by top European manufacturers
- Quick, friendly, and personalised attention
- We honour our commitments
- Proven reputation



ISO QUALITY 9001

The ISO 9001:2015 standard is the basis of the quality management system as it is internationally recognised and concentrates on all the elements of the administration of quality which a company must have as part of an effective system which allows it to administrate and improve the quality of its products or services.

ESL holds the ISO 9001:2015 certificate in the marketing and storage of metallurgical products.



OFFICES

Calle San Vicente 8
Edif. Albia, 13º dpto. 5
48001 Bilbao, SPAIN



WAREHOUSE

Calle Padurea 15
Pol. Ind. Goian
01170 Legutiano - Álava, SPAIN

Tel. +34 94 424 14 43
Fax +34 94 424 36 08

info@empresasantalucia.com
www.empresasantalucia.com